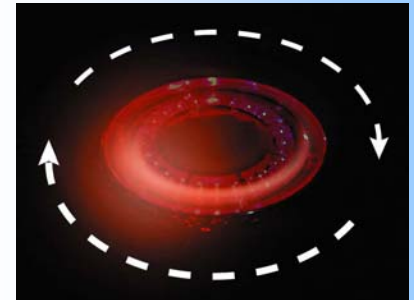
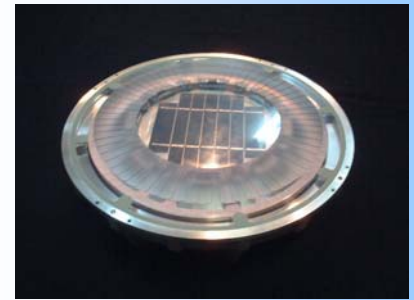


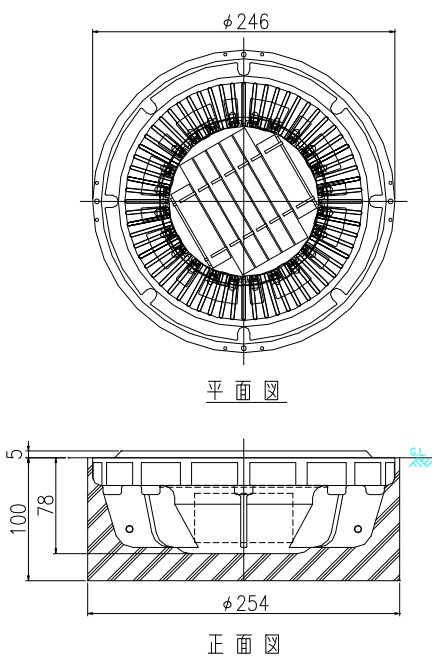
Solar Energy Powered Self-Luminous Road Stud JISLON[®] Round Flash



- 360 degrees cycle flashing with 24pcs of LED can be fitted in all kinds of traffic intersection.
- Changing the speed of flashing by sensing function, which detects a vehicle's headlight, gives attention to drivers more quickly.
- 360 degrees cycle flashing gives attention to not only drivers but also pedestrian more quickly.
- Round Flash is easy to install without any electronic wiring works.

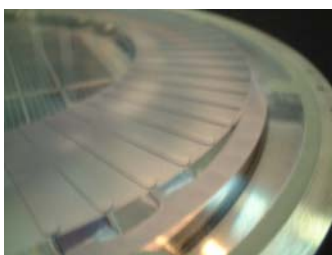


Specifications

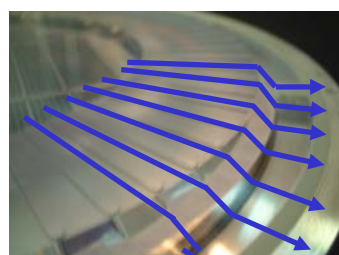


	ITEM	RF-R
Solar module	Type	Silicone crystalline
	Peak power	1.09W
	Suitable voltage	3.3V
	Suitable current	330mA
Battery	Type	Electric double layer capacitor
	Typical voltage	2.3V
	Capacity	500F
LEDs	Type	High intensity light emitting diode
	Colour	Red
	Nos. of LEDs	24pcs
	24pcs of LED is allocated at equal sapces on 360 degrees direction	
Operation	Sensing function	Photosensor detects a vehicle's headlight
	Flashing times / minutes	Start flashing automatically after dark at 125 spins around 360 degrees per minute. The speed changes to 375 spins per minute for 15 seconds when the photosensor detects a vehicle's headlight 125 +/- 13 spins / minute (normal) 375 +/- 38 spins / minute (detects a vehicle's headlight)
Body	Body	Aluminium Alloy (ADC6)
	Housing	Polycarbonate
Size		$\Phi 246 \times H83$
Weight		2700g
Product use temperature range		-20~+60°C

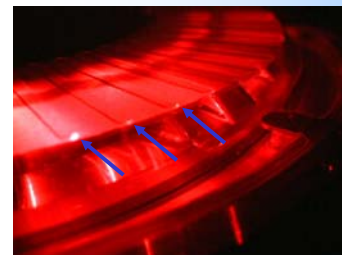
Technical advantage



① Antislip finish



② Design to prevent dirt or water gathers on surface



③ Design to maximize the light of LEDs